



# NEOTITAN

Models : NT1600 Series, NT2500 Series



- Combo type (Flatbed / Roll-to-Roll) UV Digital Inkjet Printing Machine
- 4 Colors + White + Varnish
- Simultaneous Printing Mode : Color+White / White+Color / Color+White+Color
- Max Printing Speed : 33sqm/hr



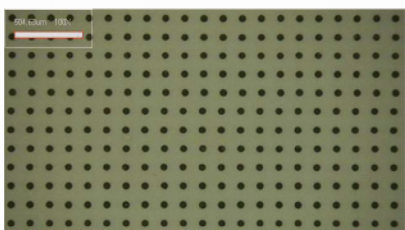
## Dilli Original UV Ink

- DKT-200 : Rigid(CMYKLmLc+W+V)
- DKT-210 : Flexible(CMYKLmLc+W+V)

## 720 X 1440 dpi(max)

High resolution to express photorealistic images for graphic and signage applications

### Image Quality Optimization System



Quality of printed image depends on formation & position of dots. S/W developed by Dilli to control them enables Neo Titan users to print the highest quality image. It is an automatic control system integrated into entire Neo Titan series.

### Auto lamp shuttering system



Each Neo printer incorporates a fully automatic UV lamp shuttering device that automatically sets the curing functionality of the lamps depending on the printing mode selected.

### Auto Vacuum Control System



Maintains uniform vacuum strength to a preset level with a PID feedback system which allows secure placement of media regardless of its size

# NEOTITAN

The most reliable partner for your business



- **Flexibility** : Rigid or roll, coated or uncoated, NEO TITAN can support them all
- **Productivity** : Belt feeding system and media setting system are well suited for volume production
- **Quality** : Perfectly controlled droplets at 1,440 dpi produce photorealistic image quality

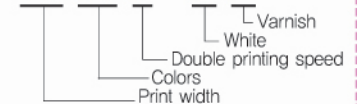
## Special Features of NEO TITAN series

- ✕ **Printing Speed**
  - Max 33sqm/hr based on 4 color(CMYK) printing
- ✕ **Resolution**
  - Max 720 × 1440 dpi(Max)
- ✕ **Color Expression**
  - Cyan, Magenta, Yellow, Black, Light Cyan, Light Magenta
  - White(full/spot printing) • Varnish(full/spot coating)
  - Double Strike Mode for backlit application
  - Dilli original Neo Rip S/W and ICC profile
- ✕ **Special High-tech Function**
  - Auto Gap Preset System : maximum media thickness of 50mm
  - Auto Ink Refill System : continuous ink supply for maximum productivity
  - Auto Vacuum Generated Negative Pressure System
  - Auto Head Suction Cleaning System
  - Auto Feeding System



### How to read model No.

**1604D-WV**



## NeoTitan Series Specifications

Model	1604S	1606WS	2506WS	1604DS	1604D-W2V	2504D-W2V	1604D-WV	2504D-WV	1604D-W2	2504D-W2
Printing Technology	DOD(Drop-on-Demand) Piezoelectric Technology									
Number of Print Head	4 Heads[512 nozzle]	8 Heads[512 nozzle]		4 Heads[1024 nozzle]	7 Heads[1024 nozzle]		6 Heads[1024 nozzle]		6 Heads[1024 nozzle]	
Print Mode	Uni and Bi-Direction / Double Strike									
Max Material Thickness	Up to 50mm									
Print Speed										
Production Mode	13~17sqm/hr	13~17sqm/hr		23~27sqm/hr	30~33sqm/hr		30~33sqm/hr		30~33sqm/hr	
Quality Mode	6~10sqm/hr	6~10sqm/hr		10~14sqm/hr	15~18sqm/hr		15~18sqm/hr		15~18sqm/hr	
White Mode	N/A	13~15sqm/hr		N/A	10~20sqm/hr		5~10sqm/hr		10~20sqm/hr	
Varnish Mode	N/A	N/A		N/A	18sqm/hr		18sqm/hr		N/A	
Resolution	720 × 1,440 dpi[Max]									
Interface	TCP / IP									
Ink Type	UV based pigment									
Color	CMYK	CMYK, Lc, Lm + White		CMYK	CMYK + White + Varnish		CMYK + White + Varnish		CMYK + White	
Dimensions[WxDxH]m	3.6x1.45x1.6	3.7x1.45x1.6	4.5x1.6x1.65	3.6x1.45x1.6	3.7x1.6x1.6	4.5x1.6x1.65	3.7x1.6x1.6	4.5x1.6x1.65	3.7x1.6x1.6	4.5x1.6x1.65
Weight[Kg] Approx.	1,140	1,200	1,560	1,140	1,320	1,560	1,320	1,560	1,320	1,560
Max Printing Width[m]	1.6xno limit	1.6xno limit	2.5xno limit	1.6xno limit	1.6xno limit	2.5xno limit	1.6xno limit	2.5xno limit	1.6xno limit	2.5xno limit
Input Voltage	3Phase 380VAC±10%, 50/60Hz									
Media	Rigid and flexible media for signage, advertisement, decoration, POP, interior/exterior, architecture, etc.									
Motor Type	Carriage & Feed : AC Servo Motor									

※ The above specifications are subject to change without prior notice for improvement.

CE FC MIC RoHS ISO 9001 ISO 14001 TVOC

KRX KOREA EXCHANGE Listed on the Korea Stock Exchange



Head office | 542-2, Dongducheon-Dong, Dongducheon-Si, Kyunggi-Do, Korea. ZIP CODE : 483-080  
 TEL 82-31-860-5500(Rep.) FAX 82-31-860-5590 | E-mail : oversales@dilli.co.kr  
 Homepage : www.dilli.co.kr



# NEOTITAN

Model : FB2513-06DW



- Dedicated true flatbed for all kinds of rigid and sheet materials
- 6 Colors(C, M, Y, K, Lc, Lm) + White
- Simultaneous Printing Mode : Color + White / White + Color
- Max Printing Speed : 30sqm/hr(Production Mode)



### Dilli Original UV Ink

- DKT-200 : Rigid(CMYKLmLc+W)
- DKT-210 : Flexible(CMYKLmLc+W)

### 720 X 1440 dpi(max)

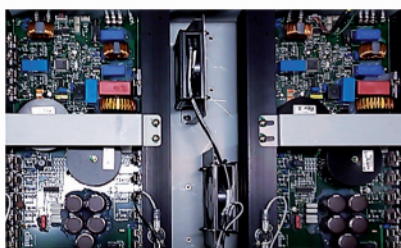
High resolution to express photorealistic images for graphic and signage applications

#### DPCM System



By utilizing Dilli's ICC color profile with full color gamut, the best printed image quality is realized

#### Lamp Power Control System



Depending on substrate, appropriate UV lamp power can be selected to guarantee the most optimal curing condition

#### Auto Vacuum Control System



Maintains uniform vacuum strength to a preset level with a PID feedback system which allows secure placement of media regardless of its size

# NEOTITAN

The most reliable partner for your business



- **Accuracy** : More accurate registration is possible with substrate firmly stationed on the vacuum bed
- **Quality** : Dual servo motor control guarantees uncompromising image quality
- **Convenience** : Built-in PC together with touch screen operation make NEO TITAN easy to use

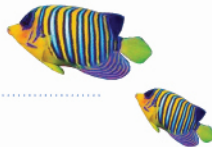
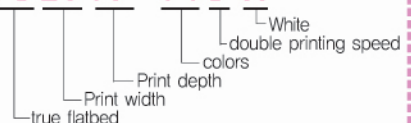
## Special Features of NEO TITAN

- ✕ Ink : TVOC certified, environmentally friendly
- ✕ Auto Vacuum Control System : handles various media sizes
- ✕ Dual Servo Auto Feeding System for precise feeding control
- ✕ UV Lamp Power Control System : prevents damages to the heat sensitive media
- ✕ Auto Lamp Shutter System : twin shutter control to select ideal curing condition
- ✕ Auto Gap Preset System : maximum media thickness of 50mm
- ✕ Sliding Ink Refill Station for easy accessibility
- ✕ Air Blowing System to handle heavy substrates
- ✕ Print Head Collision Prevention System
- ✕ Automatic Origin Pin System helps setting of media
- ✕ Antistatic System to keep media free of static



■ How to read model No.

**FB2513-06DW**



## Neo Titan FB2513-06DW Specifications

Model	NEO TITAN FB2513-06DW
Printing Technology	DOD(Drop-on-Demand) Piezoelectric Technology
Head	8 Heads[1,024 Nozzle]
Print Speed (Resolution)	Production mode 30sqm/hr (720 × 720dpi / 4 pass / Bi-Direction) Quality Production mode 22sqm/hr (720 × 1,080dpi / 6 pass / Bi-Direction) Quality mode 15sqm/hr (720 × 1,440dpi / 8 pass / Bi-Direction) White Printing mode 15sqm/hr(max)
Ink Color	6Color[C, M, Y, K, Lc, Lm] + White(2)
Max Print Width	2,500mm × 1,300mm
Media	Flat Media(Paper, Wood, Glass, Metal, Tile, Board, etc.)

※ The above specifications are subject to change without prior notice for improvement.

CE FC MIC RoHS ISO 9001 ISO 14001 TVOC

KRX KOREA EXCHANGE Listed on the Korea Stock Exchange



Head office | 542-2, Dongducheon-Dong, Dongducheon-Si, Kyunggi-Do, Korea. ZIP CODE : 483-080  
TEL 82-31-860-5500(Rep.) FAX 82-31-860-5590 | E-mail : oversales@dilli.co.kr  
Homepage : www.dilli.co.kr



# NEOTITAN

## RTR3204D Superwide 3.2m UV Roll-to-Roll



Digital UV Inkjet Printing Machine with true roll-to-roll printing capability  
Economically feasible and efficient roll-to-roll with 4 colors printing  
The highest productivity with maximum speed 150sqm/hr billboard mode  
Photorealistic printing quality with 1440dpi resolution  
The world's first high speed printhead is equipped : 150sqm/hr with single printhead per color



DILLI Neo Titan RTR3204D roll-to-roll UV printer is a revolutionary partner by delivering the most optimal combination of the highest productivity and photorealistic quality for the most competitive sign & graphic printing business field.



**Dilli Original UV Ink**  
DKT-210 : Flexible(CMYK)

### 720 X 1440 dpi(max)

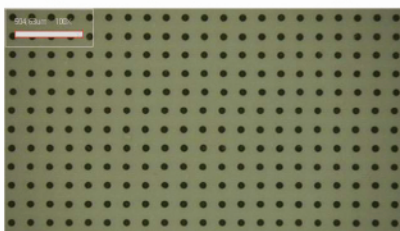
High Resolution for Photorealistic image quality for Graphics & Signs applications

#### SQR Media Setting System



It incorporates an unique shuttle quarter round media setting system differentiated in front and rear that user can set roll media with ease extremely without skewness before printing.

#### Image Quality Optimization System



Quality of printed image depends on formation & position of dots. S/W developed by Dilli to control them enables Neo Titan users to print the highest quality image. It is an automatic control system integrated into entire Neo Titan series.

#### Auto Tension Control System



It controls tension of roll-media after/before printing by automatically controlling speed and power of winding/unwinding to deliver accurate and stable feeding consistency.

# NEOTITAN

The most reliable partner for your business



## Eco-friendly Solution

Balance both environmental and business needs owing to Dilli original UV inks that contain no volatile organic compounds (VOCs) and minimize energy usage.

### Increase profit, reduce costs

Versatile printing applications on a wide range of flexible substrates and minimized ink consumption with the most optimized UV printing technology.



## Special Features of NEO TITAN RTR3204D

- ✕ Printing Speed
  - Max. Billboard Mode 150sqm per hour with CMYK(4) colors printing
- ✕ Resolution
  - Max. Fine Art Mode 1440 dpi as photorealistic quality
- ✕ Color Expression
  - Dilli original true UV flexible Black, Cyan, Magenta, Yellow
  - Double Strike printing mode for back-lit display
  - Dilli original Neo Rip S/W and ICC profile
- ✕ Special High-tech Function
  - Auto Media Tension Control System : Speed/power of winding/unwinding
  - Head Impact Prevention System : safety sensor protects head from dangerous strike
  - Auto Ink Refill System : continuous ink supply for maximum productivity
  - Print Head Alignment Controller S/W for the highest quality of image printing
  - Auto Feeding System for Roll-media
  - Auto Vacuum Generated Negative Pressure system

■ How to read model No.

**RTR 32 04 D**



## NeoTitan RTR3204D Specifications

Model	RTR3204D
Printing Technology	DOD(Drop-on-demand) Piezo Electric Technology
No. of Print Head	4 Heads(Black, Cyan, Magenta, Yellow each 1) : High Speed Printhead
No. of Nozzle	1,024 per color
Print Speed (Resolution)	Billboard mode 150sqm/hr (720 × 360dpi) Production mode 72sqm/hr (720 × 720dpi) Quality mode 54sqm/hr (720 × 1,080dpi) Fine Art mode 35sqm/hr (720 × 1,440dpi)
Media Handling	Print Width 3.2m Roll Media Input 3.2m × 1 roll / 1.5m × 2 rolls Roll Media Max. Diameter (Ø) 350 Roll Media Max. Weight 150kg Media Type : Roll Media (Polyethylene, Paper, Mesh, Vinyl, Textile, Blue-back Paper, Banner, Synthetic Paper, etc)
Machine Size	W 5,700 × D 1,500 × H 1,700(mm)
Machine Weight	3,200 kg
Input Voltage	3 phases 380 VAC±10%, 50/60Hz Option 3 phases 240 VAC±10%
Motor Type	Carriage & Feed : AC Servo Motor

※ The above specifications are subject to change without prior notice for improvement.

CE FC MIC RoHS ISO 9001 ISO 14001 TVOC

KRX KOREA EXCHANGE Listed on the Korea Stock Exchange



Head office | 542-2, Dongducheon-Dong, Dongducheon-Si, Kyunggi-Do, Korea. ZIP CODE : 483-080  
TEL 82-31-860-5500(Rep.) FAX 82-31-860-5590 | E-mail : oversales@dilli.co.kr  
Homepage : www.dilli.co.kr