

**AT-P SERIES**

- ▶ **AT-80P/120P/160P**
- AT-80P/B/120P/B/160P/B**
- AT-80PP/80PP/G**

# **ELECTRIC SCREEN PRINTER SERIES**



Patent on-hold,  
infringement subject to legal pursue



SILVER NATIONAL  
AWARD OF EXCELLENCE  
WINNER



NATIONAL  
INNOVATION  
RESEARCH AWARD



SYMBOL OF EXCELLENCE  
WINNER



NATIONAL AWARD OF SME  
(Small and Medium Enterprises)



CE CERTIFIED



ISO 9001 ISO14001  
CERTIFIED



NATIONAL  
LITTLE GIANT AWARD  
WINNER

## FEATURES

- Innovative Design**  
 Innovative electro-mechanical screen lift (patent), runs fast, stable & quiet, upgrades capacity, durable against long run, very low maintenance required.
- Solid Accuracy**  
 Profile structure plus top-class drives & guidance systems.
- Fast Setup**  
 Handy setup & adjustment mechanisms.
- Easy Operation**  
 PLC & switch panel control featuring various functions.
- Safety**  
 Full protections meeting European safety requirements.
- Options**  
 Custom-made vacuum hole/area, add Auto Registration Pins, Dripless Squeegee, Safety Light-beam, etc..

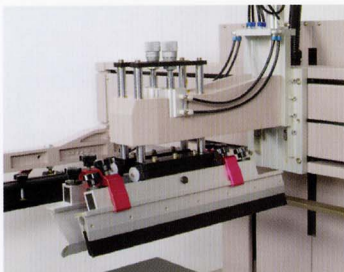
CHANGE MAY BE MADE WITHOUT PRIOR NOTICE



## ELECTRIC FLAT SCREEN PRINTER

### Model (Max. Print Area, mm in.)

AT-80P	(600x800	23 <sup>5</sup> / <sub>8</sub> x 31 <sup>1</sup> / <sub>2</sub> )
AT-120P	(700x1200	27 <sup>1</sup> / <sub>2</sub> x 47 <sup>1</sup> / <sub>2</sub> )
AT-160P	(700x1600	27 <sup>1</sup> / <sub>2</sub> x 63)



Print Head



Safety Bar

## APPLICATION

Suitable for screen-printing on substrates in film/sheet/ board form.

Ex.: Stickers, Decals, Posters, Name Plates, Dash Boards, Printed Circuit Boards, Membrane Switches, ELs, FPD Film/ Panels, etc..

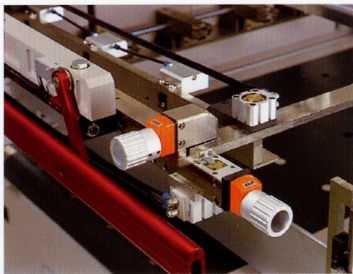
## SPECIFICATION

	AT-80P		AT-120P		AT-160P	
Table size(DxW, mm in.)	700x900	27 <sup>1</sup> / <sub>2</sub> x35 <sup>3</sup> / <sub>8</sub>	800x1400	31 <sup>1</sup> / <sub>2</sub> x55 <sup>1</sup> / <sub>8</sub>	800x1700	31 <sup>1</sup> / <sub>2</sub> x66 <sup>7</sup> / <sub>8</sub>
Vacuum area(DxW, mm in.)	600x800	23 <sup>5</sup> / <sub>8</sub> x31 <sup>1</sup> / <sub>2</sub>	700x1300	27 <sup>1</sup> / <sub>2</sub> x51 <sup>1</sup> / <sub>8</sub>	700x1580	27 <sup>1</sup> / <sub>2</sub> x62 <sup>1</sup> / <sub>8</sub>
Max. print area(DxW, mm in.)	600x800	23 <sup>5</sup> / <sub>8</sub> x31 <sup>1</sup> / <sub>2</sub>	700x1200	27 <sup>1</sup> / <sub>2</sub> x47 <sup>1</sup> / <sub>4</sub>	700x1600	27 <sup>1</sup> / <sub>2</sub> x63
Max. O/D frame size(DxW, mm in.)	900x1100	35 <sup>3</sup> / <sub>8</sub> x43 <sup>1</sup> / <sub>4</sub>	1000x1500	39 <sup>3</sup> / <sub>8</sub> x59	1000x1900	39 <sup>3</sup> / <sub>8</sub> x74 <sup>3</sup> / <sub>4</sub>
Frame height(mm in.)	25~47	1~1 <sup>3</sup> / <sub>4</sub>	25~47	1~1 <sup>3</sup> / <sub>4</sub>	25~47	1~1 <sup>3</sup> / <sub>4</sub>
Substrate thickness(mm in.)	0~25	0~1	0~25	0~1	0~25	0~1
Table height(mm in.)	960+20	37 <sup>3</sup> / <sub>4</sub> +3 <sup>3</sup> / <sub>4</sub>	960+20	37 <sup>3</sup> / <sub>4</sub> +3 <sup>3</sup> / <sub>4</sub>	960+20	37 <sup>3</sup> / <sub>4</sub> +3 <sup>3</sup> / <sub>4</sub>
Screen-lift clearance(mm in.)	300+25	11 <sup>3</sup> / <sub>4</sub> +1	300+25	11 <sup>3</sup> / <sub>4</sub> +1	300+25	11 <sup>3</sup> / <sub>4</sub> +1
Print head speed(mm in./sec.)	0~835	0~33	0~835	0~33	0~835	0~33
Max. capacity(P/H, full stroke)	800		650		480	
Screen X/Y adjustment(mm in.)	±10 / ±10	±3 <sup>8</sup> / <sub>8</sub> /±3 <sup>8</sup> / <sub>8</sub>	±10 / ±10	±3 <sup>8</sup> / <sub>8</sub> /±3 <sup>8</sup> / <sub>8</sub>	±10/±10	±3 <sup>8</sup> / <sub>8</sub> /±3 <sup>8</sup> / <sub>8</sub>
Squeegee skew-angle(°)	±9		±9		±9	
Power source	3-phase, 220V/380V, 50/60Hz					
Power consumption(kw)	2.6		3.3		4.1	
Air pressure(kg/cm <sup>2</sup> PSI)	5~6	71~85	5~6	71~85	5~6	71~85
Air consumption(l Gl/cycle)	3	0.8	3	0.8	3	0.8
Dimension(WxDxH, cm in.)	150x130x170	59x51x67	190x140x175	75x55x69	230x140x175	91x55x69
Weight(kg lbs)	805	1771	980	2156	1150	2530

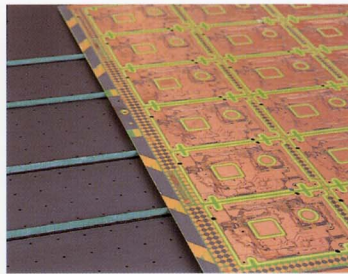
## FEATURES

- Innovative Design**  
 Innovative electro-mechanical screen lift (patent), added with belt take-off, runs fast, stable & quiet, highly upgrades capacity, durable against long run, very low maintenance required.
- Solid Accuracy**  
 Profile structure plus top-class drives & guidance systems.
- Fast Setup**  
 Handy setup & adjustment mechanisms.
- Easy Operation**  
 PLC & switch panel control featuring various functions.
- Safety**  
 Full protections meeting European safety requirements.
- Options**  
 Custom-made vacuum hole/area, add Auto Registration Pins, Dripless Squeegee, Safety Light-beam, etc..

CHANGE MAY BE MADE WITHOUT PRIOR NOTICE



Screen Registration Adjustments



Belt Take-off(optional)

## ELECTRIC FLAT SCREEN PRINTER WITH BELT TAKE-OFF

### Model (Max. Print Area, mm in.)

AT-80P/B (600x800 23<sup>5</sup>/<sub>8</sub> x 31<sup>1</sup>/<sub>2</sub>)

AT-120P/B (700x1200 27<sup>1</sup>/<sub>2</sub> x 47<sup>1</sup>/<sub>2</sub>)

AT-160P/B (700x1600 27<sup>1</sup>/<sub>2</sub> x 63)

## APPLICATION

Suitable for screen-printing on substrates in film/sheet/ board form.  
 Ex.: Name Plates, Sign Boards, Printed Circuit Boards, FPD Panels, etc..

## SPECIFICATION

	AT-80P/B		AT-120P/B		AT-160P/B	
Table size(DxW, mm in.)	700x900	27 <sup>1</sup> / <sub>2</sub> x35 <sup>3</sup> / <sub>8</sub>	800x1400	31 <sup>1</sup> / <sub>2</sub> x55 <sup>1</sup> / <sub>8</sub>	800x1700	31 <sup>1</sup> / <sub>2</sub> x66 <sup>7</sup> / <sub>8</sub>
Vacuum area(DxW, mm in.)	600x800	23 <sup>5</sup> / <sub>8</sub> x31 <sup>1</sup> / <sub>2</sub>	700x1300	27 <sup>1</sup> / <sub>2</sub> x51 <sup>1</sup> / <sub>8</sub>	700x1580	27 <sup>1</sup> / <sub>2</sub> x62 <sup>1</sup> / <sub>8</sub>
Max. print area(DxW, mm in.)	600x800	23 <sup>5</sup> / <sub>8</sub> x31 <sup>1</sup> / <sub>2</sub>	700x1200	27 <sup>1</sup> / <sub>2</sub> x47 <sup>1</sup> / <sub>4</sub>	700x1600	27 <sup>1</sup> / <sub>2</sub> x63
Max. O/D frame size(DxW, mm in.)	900x1050	35 <sup>3</sup> / <sub>8</sub> x41 <sup>1</sup> / <sub>4</sub>	1000x1450	39 <sup>3</sup> / <sub>8</sub> x57	1000x1850	39 <sup>3</sup> / <sub>8</sub> x72 <sup>3</sup> / <sub>4</sub>
Frame height(mm in.)	25~47	1~1 <sup>3</sup> / <sub>4</sub>	25~47	1~1 <sup>3</sup> / <sub>4</sub>	25~47	1~1 <sup>3</sup> / <sub>4</sub>
Substrate thickness(mm in.)	0~25	0~1	0~25	0~1	0~25	0~1
Table height(mm in.)	980+20	38 <sup>1</sup> / <sub>2</sub> +3 <sup>3</sup> / <sub>4</sub>	980+20	38 <sup>1</sup> / <sub>2</sub> +3 <sup>3</sup> / <sub>4</sub>	980+20	38 <sup>1</sup> / <sub>2</sub> +3 <sup>3</sup> / <sub>4</sub>
Screen-lift clearance(mm in.)	300+25	11 <sup>3</sup> / <sub>4</sub> +1	300+25	11 <sup>3</sup> / <sub>4</sub> +1	300+25	11 <sup>3</sup> / <sub>4</sub> +1
Print head speed(mm in./sec.)	0~835	0~33	0~835	0~33	0~835	0~33
Max. capacity(P/H, full stroke)	660		540		400	
Screen X/Y adjustment(mm in.)	±10 / ±10	±3 <sup>8</sup> / <sub>8</sub> /±3 <sup>8</sup> / <sub>8</sub>	±10/±10	±3 <sup>8</sup> / <sub>8</sub> /±3 <sup>8</sup> / <sub>8</sub>	±10/±10	±3 <sup>8</sup> / <sub>8</sub> /±3 <sup>8</sup> / <sub>8</sub>
Squeegee skew-angle(°)	±9		±9		±9	
Power source	3-phase, 220V/380V, 50/60Hz					
Power consumption(kw)	2.5		3.5		4.0	
Air pressure(kg/cm <sup>2</sup> PSI)	5~6	71~85	5~6	71~85	5~6	71~85
Air consumption(l Gl/cycle)	3	0.83	3	0.83	3	0.83
Dimension(WxDxH, cm in.)	180x130x170	71x51x67	245x140x175	97x55x69	290x140x175	114x55x69
Weight(kg lbs)	840	1848	1050	2310	1250	2750

## FEATURES

- Innovative Design**  
 Innovative electro-mechanical screen lift(patent), /G type added with gripper take-off, runs fast, stable & quiet, highly upgrades capacity, durable against long run, very low maintenance required.
- Solid Accuracy**  
 Profile structure plus top-class drives & guidance systems.
- Fast Setup**  
 Handy setup & adjustment mechanisms.
- Easy Operation**  
 PLC & switch panel control featuring various functions.
- Safety**  
 Full protections meeting European safety requirements.
- Options**  
 Custom-made vacuum hole/area, add Auto Registration Pins, Dripless Squeegee, Cleaning Roller System, Static Eliminator, etc..



CHANGE MAY BE MADE WITHOUT PRIOR NOTICE

## ELECTRIC SLIDING TABLE SCREEN PRINTER, W/O GRIPPER TAKE-OFF

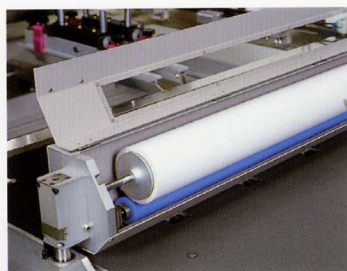
### Model (Max. Print Area, mm in.)

AT-80PP (600x740 23<sup>5</sup>/<sub>8</sub> x 29<sup>1</sup>/<sub>8</sub>)

AT-80PP/G (600x740 23<sup>5</sup>/<sub>8</sub> x 29<sup>1</sup>/<sub>8</sub>)



Gripper Take-off(/G type)



Cleaning Roller(optional)

## APPLICATION

Suitable for screen-printing on substrates in film/sheet/thin board form.  
 Ex.: Stickers, Decals, Posters, Name Plates, Dash Boards, Flexible Printed Circuits, Membrane Switches, ELs, FPD Films, etc..  
 /G type accepts light-weighted & thin flexible materials only.

## SPECIFICATION

	AT-80PP		AT-80PP/G	
Table size(DxW, mm in.)	800x1000	31 <sup>1</sup> / <sub>2</sub> x39 <sup>3</sup> / <sub>8</sub>	800x1000	31 <sup>1</sup> / <sub>2</sub> x39 <sup>3</sup> / <sub>8</sub>
Vacuum area(DxW, mm in.)	600x740	23 <sup>5</sup> / <sub>8</sub> x29 <sup>1</sup> / <sub>8</sub>	600x740	23 <sup>5</sup> / <sub>8</sub> x29 <sup>1</sup> / <sub>8</sub>
Max. print area(DxW, mm in.)	600x740	23 <sup>5</sup> / <sub>8</sub> x29 <sup>1</sup> / <sub>8</sub>	600x740	23 <sup>5</sup> / <sub>8</sub> x29 <sup>1</sup> / <sub>8</sub>
Max. O/D frame size(DxW, mm in.)	900x1050	35 <sup>3</sup> / <sub>8</sub> x41 <sup>1</sup> / <sub>4</sub>	900x1050	35 <sup>3</sup> / <sub>8</sub> x41 <sup>1</sup> / <sub>4</sub>
Frame height(mm in.)	25~47	1~1 <sup>3</sup> / <sub>4</sub>	25~47	1~1 <sup>3</sup> / <sub>4</sub>
Substrate thickness(mm in.)	0~25	0~1	0~6	0~1
Table height(mm in.)	960+20	37 <sup>3</sup> / <sub>4</sub> +3 <sup>3</sup> / <sub>4</sub>	960+20	37 <sup>3</sup> / <sub>4</sub> +3 <sup>3</sup> / <sub>4</sub>
Conveyor height(mm in.)	---		965+20	38+3 <sup>3</sup> / <sub>4</sub>
Screen-table clearance(mm in.)				
standby level	50+25	2+1	50+6	2+1
clean-up level	300+25	11 <sup>3</sup> / <sub>4</sub> +1	300+25	11 <sup>3</sup> / <sub>4</sub> +1
Table speed(mm in./sec.)	1030	40 <sup>1</sup> / <sub>2</sub>	1030	40 <sup>1</sup> / <sub>2</sub>
Print head speed(mm in./sec.)	0~835	0~33	0~835	0~33
Max. capacity(P/H, full stroke)	710		660	
Screen X/Y adjustment(mm in.)	±10/±10	±3 <sup>8</sup> / <sub>8</sub> /±3 <sup>8</sup> / <sub>8</sub>	±10/±10	±3 <sup>8</sup> / <sub>8</sub> /±3 <sup>8</sup> / <sub>8</sub>
Squeegee skew-angle(°)	±9		±9	
Power source	3-phase, 220V/380V, 50/60Hz			
Power consumption(kw)	2.8		2.8	
Air pressure(kg/cm <sup>2</sup> PSI)	5~6	71~85	5~6	71~85
Air consumption(l Gl/cycle)	3.9	1.1	3.9	1.1
Dimension(WxDxH, cm in.)	59x51x67	59x85x67	150x215x170	59x85x67
Weight(kg lbs)	1050	2310	1100	2420



## ATMA CHAMP ENT. CORP.

65, Wuchuen 7th Rd., Wuku Ind. Zone, Wuku, Taipei, Taiwan 248

TEL : +886-2-22991293 E-MAIL : atma@atma.com.tw

FAX : +886-2-22991291 WEB : http://www.atma.com.tw